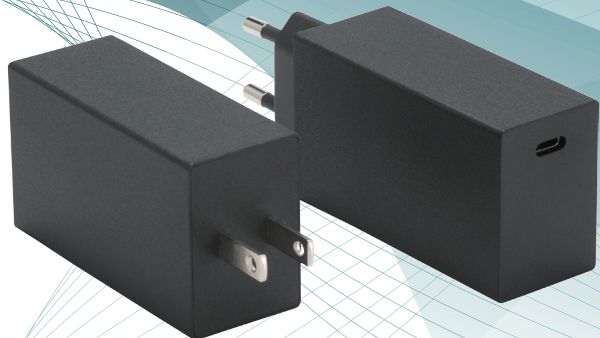




I.T.E.



# USB Type-C P.D. 60 Watt GaN Series

Wall Mount Type  
USA / Japan / Taiwan / Europe

ATP060PD - W200□

U : US Plug  
E : EU Plug

### Features :

- IEC/EN/UL 62368-1 3rd Edition
- 100-240VAC Universal Input
- P.D. 3.0 / QC 4.0+ / QC 4.0
- Regulated Output With Low Ripple Noise
- Safety Agency Requirements and EMI/EMS Certified
- Modified and Custom Design Available
- 1 Year Warranty

Output	
Load Regulation	±5% ( Typical )
Ripple & Noise	300m Vp-p Max. for Output Voltage@ Full Load
Transient Response	0.5mS for 50% Load Change Typical
Hold-up Time	10mS @ Full Load
Protection	Short Circuit Protection / Over Voltage Protection / Over Current Protection

Model	O/P Voltage	O/P Current	Watt
ATP060PD-W200□	5.0V	3.0A	15W
	9.0V	3.0A	27W
	12.0V	3.0A	36W
	15.0V	3.0A	45W
	20.0V	3.0A	60W

Electrical	
Topology	Switching Flyback
Dielectric Withstand	3000VAC Primary - Secondary
Leakage Current	0.25mA
Efficiency	DoE Level VI, ErP Stage 2
EMC Standards	EN55032
	EN61000-3-2,3
	EN55035
MTBF	300,000 Calculated Hours at 25°C , by Telcordia SR-332

Input	
Voltage	100-240VAC
Line Frequency	50-60Hz
Current	1.5A Max.
Protection	Internal Primary Current Fuse
Configuration	U for US Plug
	E for EU Plug

Environmental	
Operating Temperature	-20 to + 40°C
Storage Temperature	-20 to + 80°C
Relative Humidity	Operating : 20 to 80% RH
	Storage : 10 to 90% RH
Cooling	Natural Convection Cooling

Mechanical	
Case Dimension	U - L 88.9 × W 41.7 × H 29.5 (mm)
	E - L 110.1 × W 41.7 × H 29.5 (mm)
Weight	120g (Ref.)

**NEW**

**I.T.E.**



# Dual USB-C P.D. 100W GaN Adapter

Wall Mount Type  
USA / Japan / Taiwan

ATP100A1 - W200U

U : US Plug

- Features :**
- IEC/EN/UL 62368-1 3rd Edition
  - 100-240VAC Universal Input
  - P.D. 3.0 / QC 4.0+ / QC 4.0
  - Regulated Output With Low Ripple Noise
  - Safety Agency Requirements and EMI/EMS Certified
  - Modified and Custom Design Available
  - 1 Year Warranty

Output	
Load Regulation	±5% ( Typical )
Ripple & Noise	300m Vp-p Max. for Output Voltage@ Full Load
Transient Response	0.5mS for 50% Load Change Typical
Hold-up Time	10mS @ Full Load
Protection	Short Circuit Protection / Over Voltage Protection / Over Current Protection

Model	O/P Voltage	O/P Current	Watt
ATP100A1-W200U	5.0V	3.0A	15W
	9.0V	3.0A	27W
	12.0V	3.0A	36W
	15.0V	3.0A	45W
	20.0V	5.0A	100W

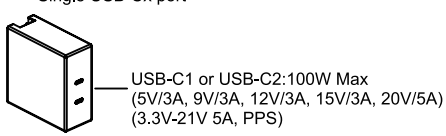
Electrical	
Topology	Switching Flyback
Dielectric Withstand	3000VAC Primary - Secondary
Leakage Current	0.25mA
Efficiency	DoE Level VI, ErP Stage 2
EMC Standards	EN55032
	EN61000-3-2,3
	EN55035
MTBF	300,000 Calculated Hours at 25°C , by Telcordia SR-332

Input	
Voltage	100-240VAC
Line Frequency	50-60Hz
Current	1.5A Max.
Protection	Internal Primary Current Fuse
Configuration	U for US Plug

Environmental	
Operating Temperature	-20 to + 40°C
Storage Temperature	-20 to + 80°C
Relative Humidity	Operating : 20 to 80% RH
	Storage : 10 to 90% RH
Cooling	Natural Convection Cooling

Mechanical	
Case Dimension	L 74.5 × W 74 × H 32 (mm)
Weight	280g (Ref.)

Single USB-Cx port



Dual USB-Cx ports

