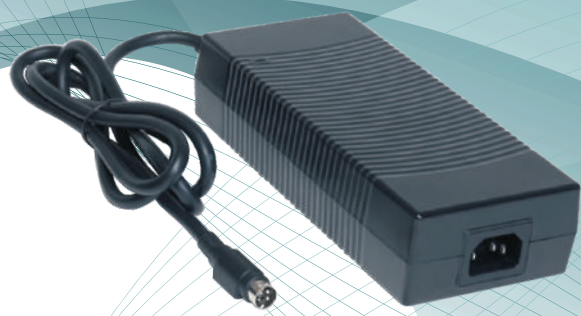


**NEW**

**Level VI**

**CoC Tier 2**



# 200 Watt Series

Desktop Type

ATS200T - P X X X



**Green Mode**  
 CEC, DoE Level VI, Energy Star, ErP Stage 2, CoC Tier 2, NRCan & GEMS  
 No Load Power Consumption Less Than 0.15W

- Features :**
- 100-240 VAC Universal Input
  - Single Output to 200W
  - Regulated Output with Low Ripple Noise
  - Safety Agency Requirements and EMI/EMS Certified
  - Private Label Marking Available
  - Modified and Custom Design Available
  - 1 Year Warranty

Model	O/P Voltage	O/P Current	Watt
ATS200T-P120	12.0V	16.00A	192W
ATS200T-P135	13.5V	14.00A	189W
ATS200T-P190	19.0V	10.50A	200W
ATS200T-P240	24.0V	8.30A	200W
ATS200T-P480	48.0V	4.17A	200W
ATS200T-P560	56.0V	3.58A	200W

**Input**

Voltage	100-240VAC
Line Frequency	50-60Hz
Current	2.8A Max.
Protection	Internal Primary Current Fuse
Configuration	IEC60320/C14

**Output**

Load Regulation	±5% ( Typical )
Ripple	2% Vp-p Max. for Output Voltage @ Full Load
Transient Response	0.5mS for 50% Load Change Typical
Hold-up Time	10mS @ Full Load
Protection	Short Circuit Protection / Over Voltage Protection / Over Current Protection / Over Temperature Protection
DC Cord	UL 2464 / 16AWG
Ferrite Core	No (Optional)

**Safety Approvals**  
 CB / UL / cUL / FCC / GS / CE / PSE / BSMI / CCC / RCM

**Electrical**

Topology	LLC
Dielectric Withstand	3000VAC Primary - Secondary
Leakage Current	3.5mA @ 3Pin
Efficiency	DoE Level VI, Energy Star, ErP Stage 2, CoC Tier 2, NRCan & GEMS Certified
EMI Conduction & Radiation	Compliance to IEC55032 Class B
Harmonic Current	Compliance to EN61000-3-2,3
EMS Immunity	Compliance to IEC61000-4-2,3,4,5,6,8,11
MTBF	300,000 Calculated Hours at 25°C , by Telcordia SR-332

**Environmental**

Operating Temperature	0 to + 40°C
Storage Temperature	-20 to + 80°C
Relative Humidity	Operating : 20 to 80% RH Storage : 10 to 90% RH
Cooling	Natural Convection Cooling

**Mechanical**

Case Dimension	L 183 × W 81 × H 42 (mm)
Weight	850g ( Ref. )