



# New Product Launch

## Single Phase Filter

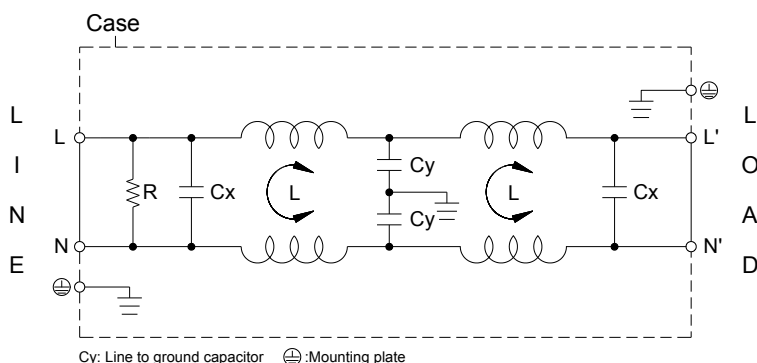
Excellent attenuation of common-mode noise

### Features

- Single phase power line filter
- 2-stage filter suitable for heavily noisy environment
- Excellent attenuation of common-mode noise
- Current rating 1~20A
- Leakage current values 50 $\mu$ A~1mA (max.)
- Touch-safe connections with hinged safety covers
- Integrated nut is in hinged cover for quick, reliable ring lug wiring
- Light weight plastic housing design
- Design with environmentally friendly compound



### Electrical schematic



### Special features:

- ※ CNBC series: best frequency bands from 150kHz~1MHz.
- ※ CNBM series: with very low leakage current; withstand voltage 4,000VAC.

### Technical data and measuring conditions

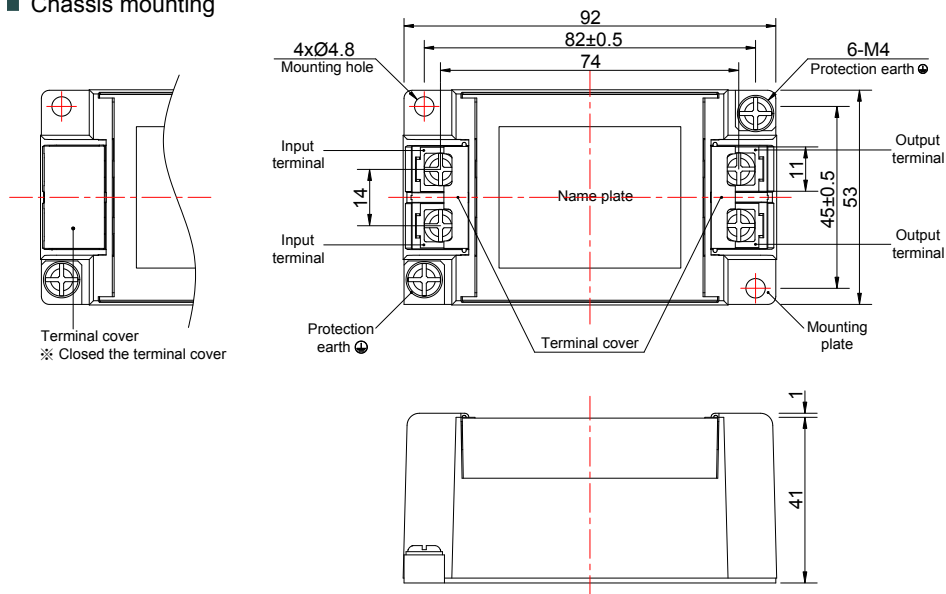
No.	CNBC series Filter PRJ No.	01CNBC472	03CNBC472	06CNBC472	10CNBC472	15CNBC472	20CNBC472
	CNBM series Filter PRJ No.	01CNBM471	03CNBM471	06CNBM471	10CNBM471	15CNBM471	20CNBM471
1	Rated voltage	AC 1 $\phi$ 250V / DC250V					
2	Rated current	1A	3A	6A	10A	15A	20A
3	Test voltage (Terminal-mounting plate)	CNBC series: 2,500 VAC; CNBM series: 4,000 VAC (Cutoff current: 20mA), 1 min. at room temperature and humidity					
4	Isolation resistance (Terminal-mounting plate)	500VDC 100M $\Omega$ min. at room temperature and humidity					
5	Leakage current	CNBC series: 1mA; CNBM series: 100 $\mu$ A @250VAC/60Hz (max.)					
6	Cy cap. value ●	0.047 ~ 0.47nF					
7	Voltage drop	1.0V max.					
8	Safety approval temp.	-25° ~ +100°					
9	Operating temperature	-40° ~ +100°					
10	Operating humidity	20 ~ 95%RH (Non condensing)					
11	Storage temp./ humidity	-40° ~ +100°; 20 ~ 95%RH (Non condensing)					
12	Vibration	10 ~ 55Hz, 19.6m/s <sup>2</sup> (2G), 3 min. period, 1 hour each X,Y,Z axis					
13	Impact	196.1m/s <sup>2</sup> (20G), 11ms, once along X,Y,Z axis					
14	Safety approvals	UL1283, CSA C22.2 No.8 (C-UL), VDE0565 Teil3-1, IEC/EN60939					

● call for alternatives.



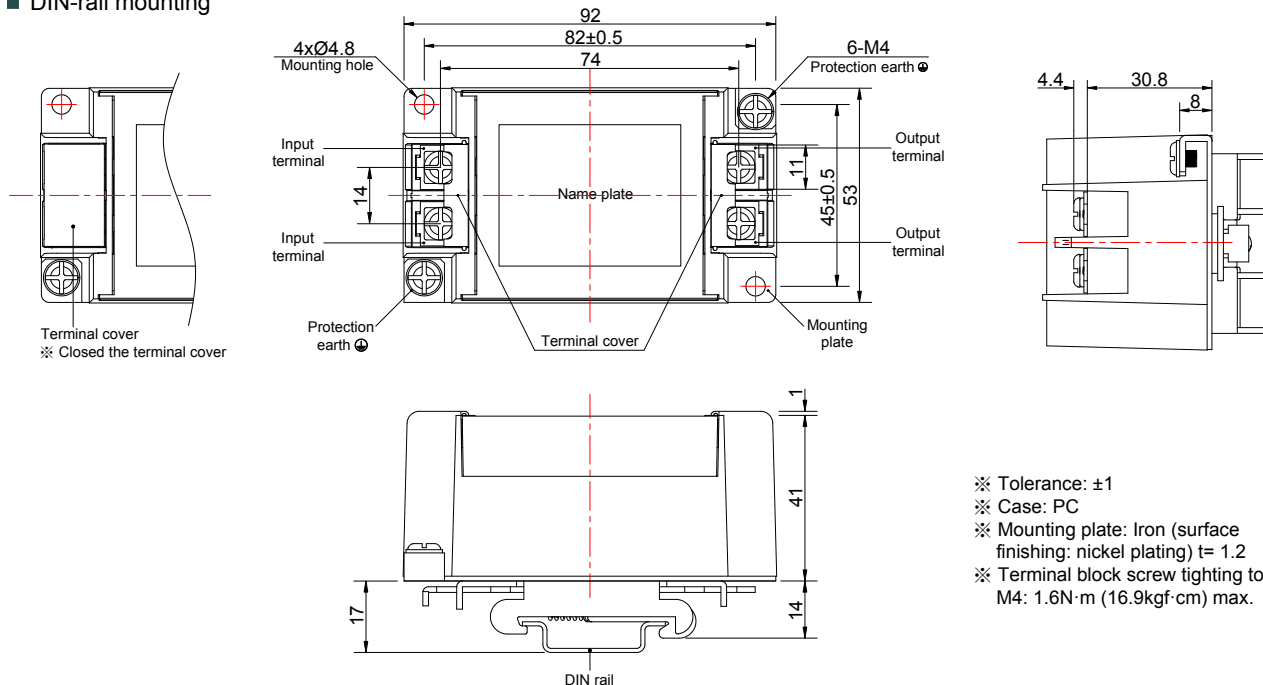
## Mechanical drawing (unit: mm)

### ■ Chassis mounting



- ※ Tolerance: ±1
- ※ Case: PC
- ※ Mounting plate: Iron (surface finishing: nickel plating) t= 1.2
- ※ Terminal block screw tightening torque M4: 1.6N·m (16.9kgf·cm) max.

### ■ DIN-rail mounting



- ※ Tolerance: ±1
- ※ Case: PC
- ※ Mounting plate: Iron (surface finishing: nickel plating) t= 1.2
- ※ Terminal block screw tightening torque M4: 1.6N·m (16.9kgf·cm) max.

### Note when installing the EMI filter on a DIN rail:

When the EMI filter is grounded through the DIN rail, the proper noise attenuation may not be achieved.  
Be sure to connect the protection earth (PE) of the EMI filter body to the earth.

