

# EMI Filter - IEC Inlet Filters



SS1 series U case | snap in type  
\*medical grade

## Ordering information

1 SSI 2 - U 3 4 5 - 6

## Current Rating - 20

20 ; 20A for UL, CUL approved, 16A for VDE, CQC approved

## Schematic type

A,C,G,I,L,N

## Components table

Refer components table

## Ground choke (options)

G ; Lg=100uH

G1 ; Lg=6uH

G2 ; Lg=180uH

G3 ; Lg=400uH

## Bleeder resistor (options)

R ; R=1M ohm; 1/4W min.

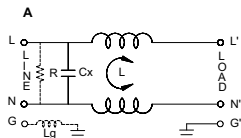
## Output terminal type

Q ; fast-on(6.3mm)

S ; solder(4mm)

W ; with wire

## Schematic type



R:options Lg:options

\* please call for other's alternates

## Components table

Code	Cx(uF)	Inductance L=mmH $\times$ 2 In Amps							
		1A	2A	3A	X	5A	10A	15A	20A
A	0.1	X	X	X	X	X	X	X	0.5

\* please call for other's combinations

## Insertion loss table

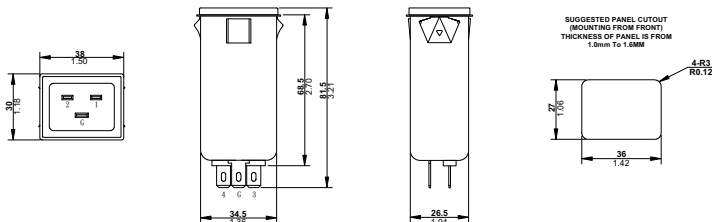
(In 50ohm system according IEC/CISPR No.17)

Code	Rating	Comm. Mode(L-G)in MHz						Diff. Mode(L-L)in MHz					
		.15	.5	1	5	10	30	.15	.5	1	5	10	30
A	20A	16	21	22	24	25	20	8	10	25	42	43	30

\* please call for other's combinations

## Mechanical Dimension

unit: mm  
inch



SUGGESTED PANEL CUTOUT  
(MOUNTING FROM FRONT)  
THICKNESS OF PANEL IS FROM  
1.0mm To 1.6MM

4-R3  
R0.12