

Ordering information

1 SSI 2 -L 3 4 5 - 6 (Y)

1 Current Rating - 01,02,03,04,06,08,10,13,15

13 ; 13A for UL, CUL approved, 10A for VDE, CQC approved
15 ; 15A for UL, CUL approved, 10A for VDE, CQC approved

2 Schematic type

A,C,G,I,L,N

3 Components table

Refer components table

4 Ground choke (options)

G ; L_G=100uH
G1 ; L_G=6uH
G2 ; L_G=180uH

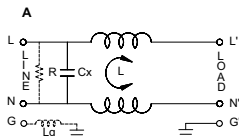
5 Bleeder resistor (options)

R ; R=1M ohm; 1/4W min.

6 Output terminal type

Q ; fast-on(6.3mm)
S ; solder(4mm)
W ; with wire

Schematic type



R:options L_G:options

* please call for other's alternates

Insertion loss table

(In 50ohm system according IEC/CISPR No.17)

Code	Rating	Comm.Mode(L-G)in MHz						Diff.Mode(L-N)in MHz					
		18	25	37	50	70	100	15	25	37	50	70	100
A	1A	34	38	39	32	18	21	9	26	37	62	51	11
	2A	29	32	34	30	19	16	8	23	34	60	48	13
	3A	28	35	37	28	22	19	8	19	28	62	44	12
	6A	18	22	24	27	25	18	8	18	26	62	45	27
	8A	20	24	26	27	25	14	8	19	26	58	47	20
	10A	8	13	15	17	16	14	8	18	25	32	28	24
	15A	7	12	15	16	14	11	7	17	24	41	32	23

* please call for other's combinations

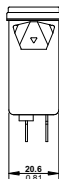
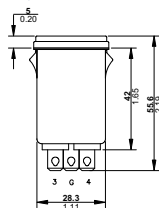
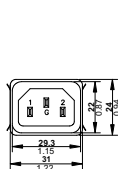
Components table

Code	Cx(μF)	Inductance LmH x 2 In Amps							
		1A	2A	3A	6A	8A	10A	15A	20A
A	0.1	6.5	3.8	2.5	0.8	1.05	0.2	0.2	X

* please call for other's combinations

Mechanical Dimension

unit: mm
inch



SUGGESTED PANEL CUTOUT
(MOUNTING FROM FRONT)
THICKNESS OF PANEL IS FROM
0.8mm To 1.2mm

