

Ordering information

1 SSI 2 - O 3 4 5 - 6

1 Current Rating - 20

20 ; 20A for UL, CUL approved, 16A for VDE, CQC approved

2 Schematic type

A,C,G,I,L,N

3 Components table

Refer components table

4 Ground choke (options)

G ; L_g=100uH

G1 ; L_g=6uH

G2 ; L_g=180uH

G3 ; L_g=400uH

5 Bleeder resistor (options)

R ; R=1M ohm; 1/4W min.

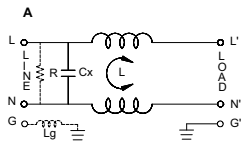
6 Output terminal type

Q ; fast-on(6.3mm)

S ; solder(4mm)

W ; with wire

Schematic type



R:options L_g:options

* please call for other's alternates

Components table

Code	Cx(uF)	Inductance L=mmH x 2 in Amps							
		1A	2A	3A	6A	8A	10A	15A	20A
A	0.1	X	X	X	X	X	X	X	0.5

* please call for other's combinations

Insertion loss table

(In 50ohm system according IEC/CISPR No.17)

Code	Rating	Comm. Mode(L-G)in MHz						Diff. Mode(L-Lin)MHz					
		.15	.5	1	5	10	30	.15	.5	1	5	10	30
A	20A	16	21	22	24	25	20	8	18	25	42	43	30
C	20A	15	20	21	22	21	16	8	19	26	44	39	25

* please call for other's combinations

Mechanical Dimension

unit: mm
inch

