

SS6 series U case | socket with fuse holder and switch

Ordering information

1 SS6 - 2 3 4 5 6 - 7 U 8

Current Rating - 01,02,03,04,06,10

1~6.3; for Semko, VDE, CQC approved
1~10; for UL, CUL approved

Module type

B1; socket + switch + one fuse
B2; socket + switch + two fuses

Schematic type

A; general purpose
B; high performance

Components table

Refer components table

Ground choke (options)

G; L_g=400uH

Bleeder resistor (options)

R; R=1M ohm; 1/4W min.

Output terminal

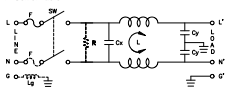
Q; fast-on(6.3mm)
W; with wire

Alternate for switch

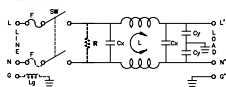
B; with black rocker & body
R; with red indicator
G; with green indicator

Schematic type

A schematic



B schematic



Components table

Code	Cx(μF)	Cy(pF)	Inductance L _{emf} x 2 in Amps						Max. Leakage(mA)			Rating Volts		Hi-pot test Volts	
			1A	2A	3A	4A	6A	10A	115VAC	250VAC	VAC	Hz	L-N-G	L-N	
S	0.1	2200	6.5	3.8	2.5	1.6	0.8	0.3	0.2	0.4	115(250)	50/80	2250VDC	1450VDC	
B	0.1	3300	3.7	2.7	1.8	1.3	0.8	0.3	0.25	0.5	115(250)	50/80	2250VDC	1450VDC	

* please call for other's combinations

Insertion loss table

(In 50ohm system according IEC/CISPR No.17)

Code	Rating	Comm Mode(L _g in MHz)									DIF Mode(L _{in} MHz)								
		.15	.5	1	5	10	30	.15	.5	1	5	10	30						
S	1A	34	38	40	32	26	11	8	25	37	71	62	12						
	2A	29	32	55	48	49	51	8	23	34	68	64	14						
	3A	28	36	39	45	48	39	8	19	27	58	65	15						
	4A	22	27	30	48	54	47	8	18	28	66	72	34						
	6A	19	24	28	44	50	47	8	18	26	43	51	31						
	10A	8	14	19	33	41	39	8	15	25	29	38	31						
B	1A	29	33	47	53	57	41	8	23	35	73	58	14						
	2A	28	37	44	52	56	41	8	19	27	74	59	17						
	3A	25	33	46	53	57	41	8	19	29	63	62	13						
	4A	19	24	27	43	53	38	8	18	25	57	60	32						
	6A	19	29	36	49	55	46	8	18	23	50	54	24						
	10A	11	19	24	41	53	36	8	15	24	51	46	25						

Mechanical Dimension

unit: mm
inch

