

EMI Filter - IEC Inlet Filters



SSI series T case | screw type
*medical grade

Ordering information

① SSI ② - ③ ④ ⑤ - ⑥ (T)

① Current Rating - 01,02,03,04,06,08,10,13,15

13 ; 13A for UL, CUL approved, 10A for VDE, CQC approved
15 ; 15A for UL, CUL approved, 10A for VDE, CQC approved

② Schematic type

A,C,G,I,L,N

③ Components table

Refer components table

④ Ground choke (options)

G ; L_g=100uH
G1 ; L_g=6uH
G2 ; L_g=180uH
G3 ; L_g=400uH

⑤ Bleeder resistor (options)

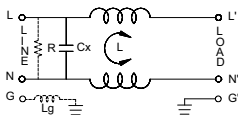
R ; R=1M ohm; 1/4W min.

⑥ Output terminal type

Q ; fast-on(6.3mm)
S ; solder(4mm)
W ; with wire

Schematic type

A schematic



R:options L_g:options

* please call for other's alternates

Insertion loss table

(In 50ohm system according IEC/CISPR No.17)

Code	Rating	Comm. Model(L-G)in MHz									DIFF Model(L-L)in MHz								
		.15	.5	1	5	10	30	.15	.5	1	5	10	30						
A	1A	34	38	39	32	16	21	9	26	37	62	51	11						
	2A	29	32	34	30	19	16	8	23	34	60	48	13						
	3A	28	35	37	28	22	19	8	19	28	52	44	12						
	6A	18	22	24	27	25	18	8	18	26	52	45	27						
	8A	20	24	26	27	25	14	8	19	26	58	47	30						
	10A	9	13	15	17	16	14	8	18	25	32	28	24						
15A	7	12	15	16	14	11	7	17	24	41	32	23							

* please call for other's combinations

Components table

Code	Cx(μF)	Inductance L _{limit} × 2 in Amps								
		1A	2A	3A	6A	8A	10A	15A	20A	
A	0.1	6.5	3.8	2.5	0.8	1.05	0.2	0.2	X	

* please call for other's combinations

Mechanical Dimension

unit: mm
inch

