

## Ordering information

1 SSI 2 - U 3 4 5 - 6

## 1 Current Rating - 20

20 ; 20A for UL, CUL approved, 16A for VDE, CQC approved

## 2 Schematic type

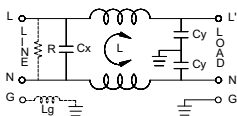
Standard(empty),B,D,E,F,H,J,K,M

## 3 Components table

Refer components table

## Schematic type

### Standard



R:options Lg:options

\* please call for other's alternates

## 4 Ground choke (options)

G ; Lg=100uH

G1 ; Lg=6uH

G2 ; Lg=180uH

G3 ; Lg=400uH

## 5 Bleeder resistor (options)

R ; R=1M ohm; 1/4W min.

## 6 Output terminal type

Q ; fast-on(6.3mm)

S ; solder(4mm)

W ; with wire

## Components table

Code	Cx(μF)	Cy(pF)	Inductance LmH x 2 in Amps		Max. Leakage(mA)		Rating Volts		Hi-pot test Volts	
			16/20A	115VAC	255VAC	VAC	Hz	L-N-G	L-N	
Empty	0.1	2200	0.5	0.2	0.4	115/250	50/60	2250VDC	1450VDC	
B	0.1	3300	0.5	0.25	0.5	115/250	50/60	2250VDC	1450VDC	

\* please call for other's combinations

## Insertion loss table

(In 50ohm system according IEC/CISPR No.17)

Code	Rating	Comm. Mode(L-G)in MHz						Diff. Mode(L-L)in MHz					
		.15	.5	1	5	10	30	.15	.5	1	5	10	30
Empty	16/20A	17	22	26	43	51	43	8	18	24	45	43	35
B	16/20A	17	23	28	47	57	45	8	18	23	51	54	34

## Mechanical Dimension

unit: mm  
inch

