

Ordering information
1SS1 **2**-**O** **3****4****5**-**6**
1 Current Rating - 20

20 ; 20A for UL, CUL approved, 16A for VDE, CQC approved

2 Schematic type

Standard(empty),B,D,E,F,H,J,K,M

3 Components table

Refer components table

4 Ground choke (options)

G ; Lg=100uH

G1 ; Lg=6uH

G2 ; Lg=180uH

G3 ; Lg=400uH

5 Bleeder resistor (options)

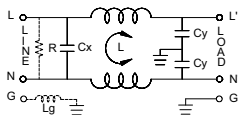
R ; R=1M ohm; 1/4W min.

6 Output terminal type

Q ; fast-on(6.3mm)

S ; solder(4mm)

W ; with wire

Schematic type
Standard


R:options Lg:options

* please call for other's alternates

Components table

Code	Cx(μF)	Cy(μF)	Inductance LmH x 2 in Amps			Max. Leakage(mA)		Rating Volts		Hi-pot test Volts	
			16/20A	115VAC	255VAC	VAC	Hz	L-N-G	L-N		
Empty	0.1	2200	0.5			0.2	0.4	115/250	50/60	2250VDC	1450VDC
B	0.1	3300	0.5			0.25	0.5	115/250	50/60	2250VDC	1450VDC

* please call for other's combinations

Insertion loss table

(In 50ohm system according IEC/CISPR No.17)

Code	Rating	Comm. Mode(L-G)in MHz						Diff. Mode(L-L)in MHz					
		.15	.5	1	5	10	30	.15	.5	1	5	10	30
Empty	16/20A	17	22	26	43	51	43	8	18	24	45	43	35
B	16/20A	17	23	28	47	57	45	8	18	23	51	54	34

Mechanical Dimension

 unit: mm
inch
