

Ordering information

1. SSI 2 - 3 4 3 - 6 (7)

1 Current Rating - 01,02,03,04,06,08,10,13,15

13 ; 13A for UL, CUL approved, 10A for VDE, CQC approved
15 ; 15A for UL, CUL approved, 10A for VDE, CQC approved

2 Schematic type

Standard(empty),B,D,E,F,H,J,K,M

3 Components table

Refer components table

4 Ground choke (options)

G ; Lg=100uH
G1 ; Lg=6uH
G2 ; Lg=180uH

5 Bleeder resistor (options)

R ; R=1M ohm; 1/4W min.

6 Output terminal type

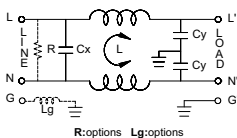
Q ; fast-on(6.3mm)
S ; solder(4mm)
W ; with wire

7 Case type

S,B,SA

Schematic type

Standard



R:options Lg:options

* please call for other's alternates

Insertion loss table

(In 50ohm system according IEC/CISPR No.17)

Code	Rating	Comm.Mode(L-G)in MHz						Diff.Mode(L-L)in MHz					
		.15	.5	1	5	10	30	.15	.5	1	5	10	30
Empty	1A	34	38	40	32	26	11	8	25	37	71	62	12
	2A	29	32	35	28	20	9	23	34	66	64	14	
	3A	28	30	33	26	18	9	19	27	58	65	15	
	4A	28	30	33	26	18	9	19	27	58	65	15	
	6A	18	24	28	44	50	47	8	18	26	43	51	31
	8A	20	26	30	44	47	40	8	18	24	65	59	22
	10A	8	14	18	33	41	39	8	18	25	29	38	31
	13A	7	14	19	34	40	38	7	17	23	39	47	27
	15A	7	14	19	34	40	38	7	17	23	39	47	27
	B	1A	29	33	47	53	57	41	8	23	35	73	58
2A		28	37	44	52	56	41	8	19	27	74	59	17
3A		25	33	48	53	57	44	8	19	29	63	62	13
4A		20	24	26	27	25	15	8	18	24	58	57	21
6A		19	29	36	49	55	46	8	18	23	50	54	24
8A		20	24	26	27	25	15	8	18	24	58	57	21
10A		11	19	24	41	63	36	8	18	24	51	46	25
13A		8	15	21	37	46	36	7	17	23	39	48	27
15A		7	15	21	37	46	36	7	17	23	39	48	27

Components table

Code	Cx(uF)	Cy(pF)	Inductance L(mH) ± 2 in Amps										Max. Leakage(mA)		Rating Volts		Hi-pot test Volts	
			1A	2A	3A	4A	5A	6A	8A	10A	13A	15A	115VAC	250VAC	VAC	Hz	L-N-G	L-N
Empty	0.1	2200	6.5	3.8	2.5	2.5	0.8	1.05	0.2	0.2	0.2	0.2	0.2	0.4	115/250	50/80	2250VDC	1450VDC
B	0.1	3300	3.7	2.7	1.8	1.3	0.8	1.05	0.3	0.2	0.2	0.25	0.5	115/250	50/80	2250VDC	1450VDC	

* please call for other's combinations

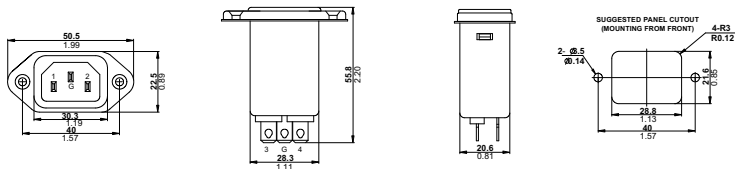
EMI Filter - IEC Inlet Filters



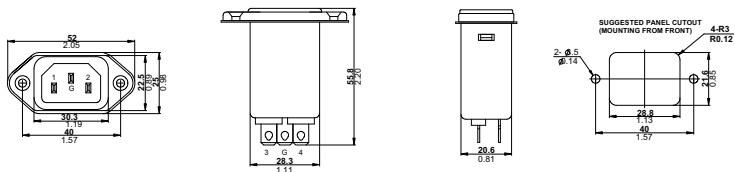
SS1 series Standard case | screw type

Mechanical Dimension unit: mm/inch

S case



B case



SA case

