

Ordering information

1. **SS6A** - 2. 3. 4. 3. 6. - 7. U 8

1. **Current Rating** - 01,02,03,04,06,10
1~6.3; for Semko, VDE, CQC approved
1~10; for UL, CUL approved

2. Module type

B1; socket+switch+one fuse
B2; socket+switch+two fuses

3. Schematic type

A; general purpose
B; high performance

4. Components table

Refer components table

5. Ground choke (options)

G; L_g=400uH

6. Bleeder resistor (options)

R; R=1M ohm; 1/4W min.

7. Output terminal

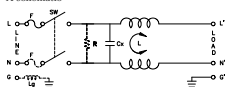
Q; fast-on(6.3mm)
W; with wire

8. Alternate for switch

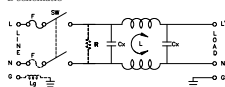
B; with black rocker & body
R; with red indicator
G; with green indicator

Schematic type

A schematic



B schematic



Components table

Code	Cx(μF)	Inductance Lw(H) x 2 In Amps					
		1A	2A	3A	4A	6A	16A
B	0.1	6.5	3.8	2.5	1.8	0.8	0.2

* please call for other's combinations

Insertion loss table

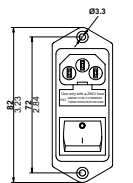
(In 50ohm system according IEC/CISPR No.17)

Code	Rating	Comm Mode(L _g)in MHz						DIFF Mode(L _L)in MHz					
		.15	.5	1	5	10	30	.15	.5	1	5	10	30
S	1A	34	38	40	32	20	24	9	26	37	61	52	16
	2A	30	34	36	31	18	22	8	23	33	46	44	18
	3A	27	34	36	29	23	22	8	19	28	65	50	14
	4A	22	27	28	29	26	13	8	19	28	51	47	26
	6A	20	25	26	27	25	32	8	19	27	55	47	30
	16A	9	13	19	19	17	13	8	18	24	51	38	28

* please call for other's combinations

Mechanical Dimension

unit: mm
inch



PULL-OUT FORCE FOR FUSEHOLDER IS 1.3-2.0KG

