

## Ordering information

1 SS6A - 2 3 4 5 6 - 7 P 8

1 **Current Rating** - 01,02,03,04,06,10  
1~6.3; for Semko, VDE, CQC approved  
1~10 ; for UL, CUL approved

## 2 Module type

B1; socket+switch+one fuse  
B2; socket+switch+two fuses

## 3 Schematic type

A; general purpose  
B; high performance

## 4 Components table

Refer components table

## 5 Ground choke (options)

G ; L<sub>G</sub>=400uH

## 6 Bleeder resistor (options)

R ; R=1M ohm; 1/4W min.

## 7 Output terminal

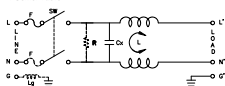
Q ; fast-on(6.3mm)  
W ; with wire

## 8 Alternate for switch

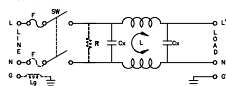
B ; with black rocker & button  
R ; with red indicator  
G ; with green indicator

## Schematic type

A schematic



B schematic



## Components table

Code	Cx(μF)	Inductance LcmH x 2 in Amps					
		1A	2A	3A	4A	6A	10A
S	6.1	6.5	3.8	2.5	1.8	0.8	0.2

\* please call for other's combinations

## Insertion loss table

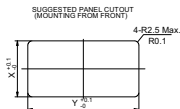
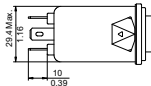
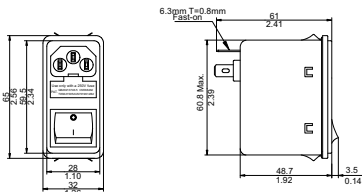
(In 50ohm system according IEC/CISPR No.17)

Code	Rating	Comm Mode(L <sub>G</sub> )in MHz						DIF Mode(L <sub>L</sub> )in MHz					
		.15	.5	1	5	10	30	.15	.5	1	5	10	30
S	1A	34	38	40	32	20	24	9	26	37	61	52	16
	2A	30	34	36	31	18	22	8	23	33	46	44	18
	3A	27	34	36	29	23	22	8	19	28	65	50	14
	4A	22	27	28	29	26	13	8	19	28	51	47	26
	6A	20	25	26	27	25	32	8	19	27	55	47	30
	10A	9	13	19	19	17	13	8	18	24	51	36	28

\* please call for other's combinations

## Mechanical Dimension

unit: mm  
inch



Panel Thickness	X(Suggested)	Y(Suggested)
1.6mm ± 0.1mm	29.7	61.8
1.5mm ± 0.1mm	28.5	61.9
1.4mm ± 0.1mm	29.9	62.1