

SS3 series L(S) case | socket with fuse holder
*medical grade

Ordering information

1-SS3 2-3 4-L 5 6 7- 8-(S)

1 Current Rating - 01,02,03,04,06,6.3,08,10

1~6.3; for VDE, CQC approved
1~10 ; for UL, CUL approved

2 Schematic type

A,C

3 Additional schematic (options)

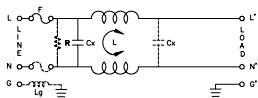
A; additional Cx behind of choke

4 Function type

1; single fuse
2; dual fuses

Schematic type

A



* please call for other's alternates

Insertion loss table

(In 50ohm system according IEC/CISPR No.17)

Code	Rating	Comm.Mode(L-G)in MHz										Diff.Mode(L-L)in MHz									
		.15	.5	1	5	10	30	150	300	600	900	1.5	3	6	10	30	150	300	600	900	
S	1A	34	38	39	32	16	21	9	26	37	62	51	11								
	2A	29	32	34	30	19	16	8	23	34	60	48	13								
	3A	28	35	37	28	22	19	8	19	28	52	44	12								
	4A	22	26	27	30	30	28	8	20	29	57	52	33								
	6A	18	22	24	27	25	18	8	18	26	52	45	27								
	8A	20	24	26	27	25	14	8	18	26	43	40	17								
	10A	8	13	15	17	16	14	8	18	25	32	28	24								
	B	1A	29	33	34	30	20	16	8	24	35	58	45	15							
2A		28	35	37	28	22	24	8	20	29	61	48	15								
3A		25	33	36	31	26	21	8	20	30	57	47	13								
4A		19	23	24	27	27	21	8	19	27	47	45	30								
6A		16	20	21	24	24	18	8	18	26	43	40	17								
10A		11	16	18	18	16	12	8	18	24	47	36	24								

* please call for other's combinations

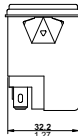
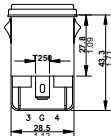
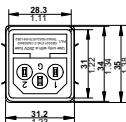
Components table

Code	Cx(uF)	Inductance L(mH) x 2 in Amps							
		1A	2A	3A	4A	6A	8A	10A	
S	0.1	6.5	3.8	2.5	1.6	0.8	1.05	0.2	
B	0.1	3.7	2.7	1.8	1.3	X	X	0.3	

* please call for other's combinations

Mechanical Dimension

unit: mm
inch



SUGGESTED PANEL CUTOUT
(MOUNTING FROM FRONT)

