

**SS3 series P(S) case | socket with fuse holder**  
\*Medical grade

## Ordering information

① SS3 ② - ③ ④ P ⑤ ⑥ ⑦ - ⑧ (S)

## ① Current Rating - 01,02,03,04,06,6.3,08,10

1~6.3; for VDE, CQC approved  
1~10; for UL, CUL approved

## ② Schematic type

A, C

## ③ Additional schematic (options)

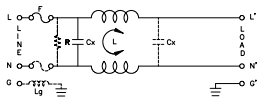
A; additional Cx behind of choke

## ④ Function type

1; single fuse  
2; dual fuses

## Schematic type

A



\* please call for other's alternates

## ⑤ Components table

Refer components table

## ⑥ Ground choke (options)

G; Lg=100uH  
G1; Lg=120uH  
G2; Lg=400uH

## ⑦ Bleeder resistor (options)

R; R=1M ohm; 1/4W min.

## ⑧ Output terminal type

Q; fast-on(6.3mm)  
S; solder(4mm)  
W; with wire

## Insertion loss table

(In 50ohm system according IEC/CISPR No.17)

Code	Rating	Comm. Mode(L-G)in MHz										Diff. Mode(L-L)in MHz														
		.15	.5	1	5	10	30	.15	.5	1	5	10	30													
S	1A	34	38	39	32	16	21	9	26	37	62	51	11	2A	29	32	34	30	19	16	8	23	34	60	48	13
	3A	28	35	37	28	22	19	8	19	28	52	44	12	4A	22	26	27	30	30	28	8	20	29	57	52	33
	6A	18	22	24	27	25	18	8	18	26	52	45	27	8A	20	24	26	27	25	14	8	18	26	43	40	17
	10A	8	13	15	17	16	14	8	18	25	32	28	24	1A	29	33	34	30	20	16	8	24	35	58	45	15
	2A	28	35	37	28	22	24	8	20	29	61	48	15	3A	25	33	38	51	56	41	8	20	30	57	47	13
	4A	19	23	24	27	27	21	8	19	27	47	45	30	6A	11	16	18	18	16	12	8	18	24	47	36	24
10A	11	16	18	18	16	12	8	18	24	47	36	24														

\* please call for other's combinations

## Components table

Code	Cx(uF)	Inductance LmH x 2 in Amps							
		1A	2A	3A	4A	6A	8A	10A	
S	0.1	6.5	3.8	2.5	1.6	0.8	1.05	0.2	
B	0.1	3.7	2.7	1.8	1.3	X	X	0.3	

\* please call for other's combinations

## Mechanical Dimension

unit: mm  
inch

