

SS3 series P case | socket with fuse holder
*medical grade

Ordering information

1 SS3 2 - 3 4 P 5 6 7 - 8

1 Current Rating - 01,02,03,04,06,6.3,08,10

1~6.3; for VDE, CQC approved
1~10 ; for UL, CUL approved

2 Schematic type

A,C

3 Additional schematic (options)

A; additional Cx behind of choke

4 Function type

1; single fuse
2; dual fuses

5 Components table

Refer components table

6 Ground choke (options)

G ; Lg=100uH
G1 ; Lg=120uH
G2 ; Lg=400uH

7 Bleeder resistor (options)

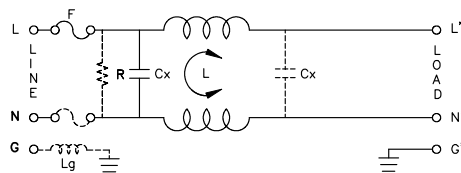
R ; R=1M ohm; 1/4W min.

8 Output terminal type

Q ; fast-on(6.3mm)
S ; solder(4mm)
W ; with wire

Schematic type

A



* please call for other's alternates

Insertion loss table

(In 50ohm system according IEC/CISPR No.17)

Code	Rating	Comm.Mode(L-G)in MHz						Diff.Mode(L-L)in MHz					
		.15	.5	1	5	10	30	.15	.5	1	5	10	30
S	1A	34	38	39	32	16	21	9	26	37	62	51	11
	2A	29	32	34	30	19	16	8	23	34	60	48	13
	3A	28	35	37	28	22	19	8	19	28	52	44	12
	4A	22	26	27	30	30	28	8	20	29	57	52	33
	6A	18	22	24	27	25	18	8	18	26	52	45	27
	8A	20	24	26	27	25	14	8	18	26	43	40	17
B	1A	8	13	15	17	16	14	8	18	25	32	28	24
	2A	29	33	34	30	20	16	8	24	35	58	45	15
	3A	28	35	37	28	22	24	8	20	29	61	48	15
	4A	25	33	58	51	56	41	8	20	30	57	47	13
	4A	19	23	24	27	27	21	8	19	27	47	45	30
	10A	11	16	18	18	16	12	8	18	24	47	36	24

* please call for other's combinations

Components table

Code	Cx(uF)	Inductance L=mH x 2 in Amps							
		1A	2A	3A	4A	6A	8A	10A	
S	0.1	6.5	3.8	2.5	1.6	0.8	1.05	0.2	
B	0.1	3.7	2.7	1.8	1.3	X	X	0.3	

* please call for other's combinations

Mechanical Dimension

unit: mm
inch

