

SS3 series SW(S) case | socket with switch
*medical grade

Ordering information

① SS3 ② - ③ S ④ ⑤ ⑥ - ⑦ (⑧)

① Current Rating - 01,02,03,04,06,6.3,08,10

1~10 ; for UL, CUL, VDE, CQC approved

② Schematic type

A,C

③ Additional schematic (options)

A; additional Cx behind of choke

④ Components table

Refer components table

⑤ Ground choke (options)

G ; Lg=100uH

G1 ; Lg=120uH

G2 ; Lg=400uH

⑥ Bleeder resistor (options)

R ; R=1M ohm; 1/4W min.

⑦ Output terminal type

Q ; fast-on(6.3mm)

S ; solder(4mm)

W ; with wire

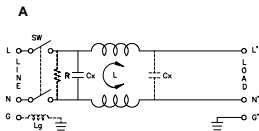
⑧ Special code

B ; switch with black rocker & body

R ; switch with red indicator

G ; switch with green indicator

Schematic type



* please call for other's alternates

Insertion loss table

(In 50ohm system according IEC/CISPR No.17)

Code	Rating	Comm.Mode(L-G)in MHz									Diff.Mode(L-L)in MHz								
		-15	5	1	5	10	30	-18	5	1	5	10	30						
S	1A	34	38	39	32	16	21	9	26	37	62	51	11						
	2A	29	32	34	30	19	16	8	23	34	60	48	13						
	3A	28	35	37	28	22	19	8	19	28	52	44	12						
	4A	22	26	27	30	30	28	8	20	29	57	52	33						
	6A	18	22	24	27	25	18	8	18	26	52	45	27						
	8A	20	24	26	27	25	14	8	18	26	43	40	17						
B	10A	8	13	15	17	16	14	8	18	25	32	28	24						
	1A	29	33	34	30	20	16	8	24	35	58	45	15						
	2A	28	35	37	28	22	24	8	20	29	61	48	15						
	3A	25	33	36	31	26	41	8	20	30	57	47	13						
	4A	19	23	24	27	27	21	8	19	27	47	45	30						
	10A	11	16	18	18	16	12	8	18	24	47	36	24						

* please call for other's combinations

Components table

Code	Cx(uF)	Inductance L limit x 2 in Amps							
		1A	2A	3A	4A	6A	8A	10A	
S	0.1	6.5	3.8	2.5	1.6	0.8	1.05	0.2	
B	0.1	3.7	2.7	1.8	1.3	X	X	0.3	

* please call for other's combinations

Mechanical Dimension

unit: mm

inch

