

Ordering information

1-SS3 2-3 3-S 3 3 7- 3 (S)

Current Rating - 01,02,03,04,06,6.3,08,10

1~6.3; for VDE, CQC approved
1~10 ; for UL, CUL approved

Schematic type

A,C

Additional schematic (options)

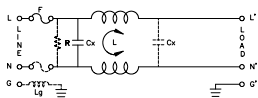
A; additional Cx behind of choke

Function type

1; single fuse
2; dual fuses

Schematic type

A



* please call for other's alternates

SS3 series S(S) case | socket with fuse holder
*medical grade

Components table

Refer components table

Ground choke (options)

G ; L_g=100uH
G1 ; L_g=120uH
G2 ; L_g=400uH

Bleeder resistor (options)

R ; R=1M ohm; 1/4W min.

Output terminal type

Q ; fast-on(6.3mm)
S ; solder(4mm)
W ; with wire

Insertion loss table

(In 50ohm system according IEC/CISPR No.17)

Code	Rating	Comm.Mode(L-G)in MHz										Diff.Mode(L-L)in MHz														
		.15	.5	1	5	10	30	.15	.5	1	5	10	30													
S	1A	34	38	39	32	16	21	9	26	37	52	51	11	2A	29	32	34	30	19	16	8	23	34	60	48	13
	3A	28	35	37	28	22	19	8	19	28	52	44	12	4A	22	26	27	30	30	28	8	20	29	57	52	33
	6A	18	22	24	27	25	18	8	18	26	52	45	27	8A	20	24	26	27	25	14	8	18	26	43	40	17
	10A	8	13	15	17	16	14	8	18	25	32	28	24	1A	29	33	34	30	20	16	8	24	35	58	45	15
	2A	28	35	37	28	22	24	8	20	29	61	48	15	3A	25	33	36	31	26	21	8	20	30	57	47	13
	4A	19	23	24	27	27	21	8	19	27	47	45	30	6A	11	16	18	18	16	12	8	18	24	47	36	24
	8A	11	16	18	18	16	12	8	18	24	47	36	24	10A	11	16	18	18	16	12	8	18	24	47	36	24

* please call for other's combinations

Components table

Code	Cx(uF)	Inductance L(mH) x 2 in Amps														
		1A	2A	3A	4A	6A	8A	10A								
S	0.1	6.5	3.8	2.5	1.6	0.8	1.05	0.2								
B	0.1	3.7	2.7	1.8	1.3	X	X	0.3								

* please call for other's combinations

Mechanical Dimension

unit: mm
inch

