

# EMI Filter - IEC Inlet Filters



SS1 series L(Y) case | snap in type

## Ordering information

1.SS1 2.-L 3.4 4.5 - 6.(Y)

### 1 Current Rating - 01,02,03,04,06,08,10,13,15

13 ; 13A for UL, CUL approved, 10A for VDE, CQC approved  
15 ; 15A for UL, CUL approved, 10A for VDE, CQC approved

### 2 Schematic type

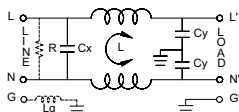
Standard (empty), B, D, E, F, H, J, K, M

### 3 Components table

Refer components table

## Schematic type

### Standard



R:options Lg:options

\* please call for other's alternates

### 4 Ground choke (options)

G ; Lg=100uH  
G1 ; Lg=6uH  
G2 ; Lg=180uH

### 5 Bleeder resistor (options)

R ; R=1M ohm; 1/4W min.

### 6 Output terminal type

Q ; fast-on(6.3mm)  
S ; solder(4mm)  
W ; with wire

## Insertion loss table

(In 50ohm system according IEC/CISPR No.17)

Code	Rating	Comm Model(L) in MHz						Diff Model(L) in MHz					
		15	5	1	5	10	30	15	5	1	5	10	30
Empty	1A	34	38	40	32	26	11	9	25	37	71	62	12
	2A	29	32	55	48	49	51	8	23	54	68	64	14
	3A	28	36	39	45	48	39	8	19	27	58	65	15
	4A	28	36	39	45	48	39	8	19	27	58	65	15
	6A	18	24	28	44	50	47	8	18	26	43	51	31
	8A	20	25	30	44	47	40	8	18	24	65	59	22
	10A	8	14	19	33	41	39	8	18	25	29	38	31
	13A	7	14	19	34	40	38	7	17	23	36	47	27
	15A	7	14	19	34	40	38	7	17	23	39	47	27
	B	1A	29	33	47	53	57	41	8	23	35	73	58
2A		28	37	44	52	56	41	8	19	27	74	59	17
3A		25	33	46	53	57	44	8	19	29	63	62	13
4A		20	24	26	27	25	15	8	18	24	58	57	21
6A		19	29	36	49	55	46	8	18	23	50	54	24
8A		20	24	26	27	25	15	8	18	24	58	57	21
10A		11	19	24	41	63	36	8	18	24	51	46	25
13A		8	15	21	37	46	36	7	17	23	39	48	27
15A		7	15	21	37	46	36	7	17	23	39	48	27

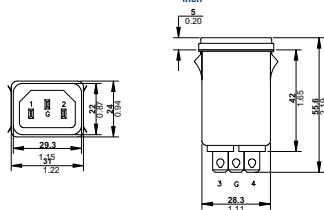
## Components table

Code	Cx(uF)	Cy(pF)	Inductance LmH ± 2 in Amps										Max. Leakage(mA)		Rating Volts		Hi-pot test Volts	
			1A	2A	3A	4A	6A	8A	10A	13A	15A	115VAC	250VAC	VAC	Hz	L-N-G	L-N	1450VDC
Empty	0.1	2200	6.5	3.8	2.5	2.5	0.8	1.05	0.2	0.2	0.2	0.2	0.2	0.4	115/250	50/80	2250VDC	1450VDC
B	0.1	3300	3.7	2.7	1.8	1.3	0.8	1.05	0.3	0.2	0.2	0.2	0.5	0.5	115/250	50/80	2250VDC	1450VDC

\* please call for other's combinations

## Mechanical Dimension

unit: mm  
inch



SUGGESTED PANEL CUTOFF  
(INCLUDING FROM FRONT)  
THICKNESS OF PANEL IS FROM  
0.8mm To 1.2mm

