

EMI Filter - Power Entry Module



SS3 series SW(P) case | socket with switch

Ordering information

1 SS3 2 - 3 SP 4 5 6 - 7 (E)

1 Current Rating - 01,02,03,04,06,6.3,08,10

1~10 ; for UL, CUL, VDE, CQC approved

2 Schematic type

Standard(empty),B,D,E

3 Additional schematic (options)

A; additional Cx behind of choke

4 Components table

Refer components table

5 Ground choke (options)

G : Lg=100uH

G1 : Lg=120uH

G2 : Lg=400uH

6 Bleeder resistor (options)

R ; R=1M ohm; 1/4W min.

7 Output terminal type

Q ; fast-on(6.3mm)

S ; solder(4mm)

W ; with wire

8 Special code

B ; switch with black rocker & body

R ; switch with red indicator

G ; switch with green indicator

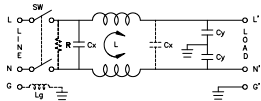
Insertion loss table

(In 50ohm system according IEC/CISPR No.17)

Code	Rating	Comm. Mode(L-G)in MHz										DIFF Mode(L-N)in MHz									
		.15	.5	1	5	10	30	.15	.5	1	5	10	30								
S	1A	34	38	40	32	26	11	8	25	37	71	62	12								
	2A	29	32	55	48	49	51	8	23	34	68	64	14								
	3A	28	36	39	45	48	39	8	19	27	58	65	15								
	4A	22	27	30	48	54	47	8	19	28	66	72	34								
	5A	18	24	28	44	50	47	8	18	26	43	51	31								
	6.3A	18	24	28	44	50	47	8	18	26	43	51	31								
	8A	20	26	30	44	47	40	8	18	24	65	59	22								
	10A	8	14	18	33	41	39	8	18	25	29	38	31								
	B	1A	29	33	47	53	57	41	8	23	35	73	58	14							
		2A	28	37	44	52	56	41	8	19	27	74	59	17							
3A		25	33	46	53	57	41	8	19	29	63	62	13								
4A		19	24	27	43	53	38	8	18	25	57	60	32								
5A		19	29	36	49	55	46	8	18	23	50	54	24								
6.3A		19	29	36	49	55	46	8	18	23	50	54	24								
8A		20	24	26	27	25	15	8	18	24	58	57	21								
10A		11	19	24	41	53	36	8	18	24	51	46	25								

Schematic type

Standard



* please call for other's alternates

Components table

Code	Cx(uF)	Cy(uF)	Inductance L(mH) x 2 in Amps										Max. Leakage(mA)		Rating Volts		Hi-pot test Volts	
			1A	2A	3A	4A	6A	6.3A	8A	10A	115VAC	250VAC	VAC	Hz	L-N-G	L-N	1450VDC	1450VDC
S	0.1	2300	6.5	3.8	2.5	1.6	0.8	0.8	1.05	0.3	0.2	0.4	115/250	50/80	225VDC	1450VDC	1450VDC	1450VDC
B	0.1	3300	3.7	2.7	1.8	1.3	0.8	0.8	1.05	0.3	0.25	0.5	115/250	50/80	225VDC	1450VDC	1450VDC	1450VDC

* please call for other's combinations

Mechanical Dimension

unit: mm

