

EMI Filter - Power Entry Module



Ordering information

① SS3 ② - ③ S ④ ⑤ ⑥ - ⑦ (□)

① Current Rating - 01,02,03,04,06,6.3,08,10

1~10 ; for UL, CUL, VDE, CQC approved

② Schematic type

Standard(empty),B,D,E

③ Additional schematic (options)

A; additional Cx behind of choke

④ Components table

Refer components table

⑤ Ground choke (options)

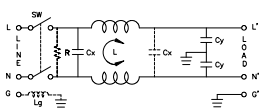
G : Lg=100uH

G1 : Lg=120uH

G2 : Lg=400uH

Schematic type

Standard



* please call for other's alternates

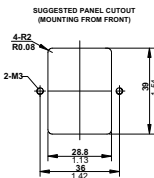
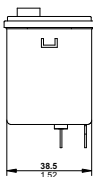
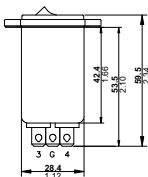
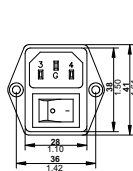
Components table

Code	Cx(uF)	Cy(uF)	Inductance L(mH) x 2 In Amps									Max. Leakage(mA)		Rating Volts		Hi-pot test Volts		
			1A	2A	3A	4A	6A	6.3A	8A	10A	115VAC	250VAC	VAC	Hz	L-N-G	L-N		
S	0.1	2200	6.5	3.8	2.5	1.6	0.8	0.8	1.05	0.3	0.2	0.4	115/250	50/50	2250VDC	1450VDC		
B	0.1	3300	3.7	2.7	1.8	1.3	0.8	0.8	1.05	0.3	0.25	0.5	115/250	50/50	2250VDC	1450VDC		

* please call for other's combinations

Mechanical Dimension

unit: mm
inch



SS3 series SW(S) case | socket with switch

⑥ Bleeder resistor (options)

R ; R=1M ohm; 1/4W min.

⑦ Output terminal type

Q ; fast-on(6.3mm)

S ; solder(4mm)

W ; with wire

⑧ Special code

B ; switch with black rocker & body

R ; switch with red indicator

G ; switch with green indicator

Insertion loss table

(In 50ohm system according IEC/CISPR No.17)

Code	Rating	Comm. Mode(L-G)in MHz					Diff. Mode(L-N)in MHz						
		.15	.5	1	5	10	.15	.5	1	5	10	30	
S	1A	34	38	40	32	26	11	8	25	37	71	62	12
	2A	29	32	55	48	49	51	8	23	34	68	64	14
	3A	28	36	39	45	48	39	8	19	27	58	65	15
	4A	22	27	30	48	54	47	8	19	28	66	72	34
	6A	18	24	28	44	50	47	8	18	26	43	51	31
	6.3A	18	24	28	44	50	47	8	18	26	43	51	31
B	6A	20	26	30	44	47	40	8	18	24	65	59	22
	10A	8	14	18	33	41	39	8	18	25	29	38	31
	1A	29	33	47	53	57	41	8	23	35	73	58	14
	2A	28	37	44	52	56	41	8	19	27	74	59	17
	3A	25	33	46	53	57	41	8	19	29	63	62	13
	4A	19	24	27	43	53	38	8	18	25	57	60	32
A	6A	19	29	36	49	55	46	8	18	23	50	54	24
	6.3A	19	29	36	49	55	46	8	18	23	50	54	24
	8A	20	24	26	27	25	15	8	18	24	58	57	21
	10A	11	19	24	41	53	36	8	18	24	51	46	25