

EMI Filter - IEC Inlet Filters



SSI series T case | screw type

Ordering information

1) SSI 2) - 3) 4) 5) - 6) (T)

1) Current Rating - 01,02,03,04,06,08,10,13,15

13 ; 13A for UL, CUL approved, 10A for VDE, CQC approved
15 ; 15A for UL, CUL approved, 10A for VDE, CQC approved

2) Schematic type

Standard (empty), B, D, E, F, H, J, K, M

3) Components table

Refer components table

4) Ground choke (options)

G ; Lg=100uH
G1 ; Lg=6uH
G2 ; Lg=180uH
G3 ; Lg=400uH

5) Bleeder resistor (options)

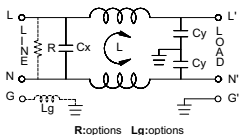
R ; R=1M ohm; 1/4W min.

6) Output terminal type

Q ; fast-on(6.3mm)
S ; solder(4mm)
W ; with wire

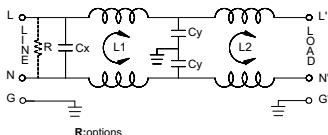
Schematic type

Standard



* please call for other's alternates

M schematic



* please call for other's alternates

Components table

Code	Cx(μF)	Cy(μF)	Inductance L=ml x 2 in Amps										Max. Leakage(mA)		Rating Volts		Hi-pot test Volts	
			1A	2A	3A	4A	6A	8A	10A	13A	15A	115VAC	250VAC	VAC	Hz	LN-G	LN	
Empty	0.1	2200	6.5	3.8	2.5	2.5	0.8	1.05	0.2	0.2	0.2	0.2	0.4	115/250	50/60	2250VDC	1450VDC	
B	0.1	3300	3.7	2.7	1.8	1.3	0.8	1.05	0.3	0.2	0.2	0.25	0.5	115/250	50/60	2250VDC	1450VDC	

* please call for other's combinations

Mechanical Dimension

unit: mm
inch

