

Ordering information

1. **SS1** 2. - 3. 4. 3. - 6. (7.)

1 Current Rating - 01,02,03,04,06,08,10,13,15

13 ; 13A for UL, CUL approved, 10A for VDE, CQC approved
15 ; 15A for UL, CUL approved, 10A for VDE, CQC approved

2 Schematic type

A,C,G,I,LL,N

3 Components table

Refer components table

4 Ground choke (options)

G ; Lg=100uH
G1 ; Lg=6uH
G2 ; Lg=180uH

5 Bleeder resistor (options)

R ; R=1M ohm; 1/4W min.

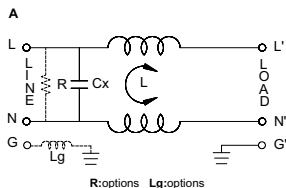
6 Output terminal type

Q ; fast-on(6.3mm)
S ; solder(4mm)
W ; with wire

7 Case type

S,B,SA

Schematic type



* please call for other's alternates

Components table

Code	Cx(μF)	Inductance L=mH x 2 in Amps								
		1A	2A	3A	6A	8A	10A	15A	20A	
A	0.1	6.5	3.8	2.5	0.8	1.05	0.2	0.2	X	

* please call for other's combinations

Insertion loss table (In 50ohm system according IEC/CISPR No.17)

Code	Rating	Comm Mode(L-G)in MHz						Diff Mode(L-L)in MHz					
		.15	.5	1	5	10	30	.15	.5	1	5	10	30
A	1A	34	38	39	32	16	21	9	26	37	62	51	11
	2A	29	32	34	30	19	16	8	23	34	60	48	13
	3A	28	35	37	28	22	19	8	19	28	52	44	12
	6A	18	22	24	27	25	18	8	18	26	52	45	27
	8A	20	24	26	27	25	14	8	19	26	58	47	20
	10A	8	13	15	17	16	14	8	18	25	32	28	24
	15A	7	12	15	16	14	11	7	17	24	41	32	23

* please call for other's combinations

EMI Filter - IEC Inlet Filters

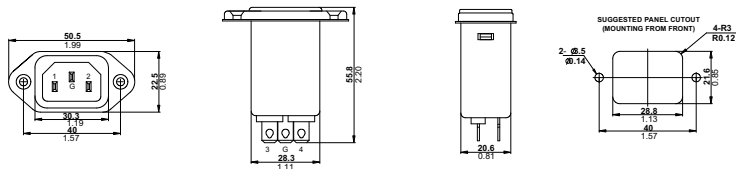


SS1 series Standard case | screw type
*medical grade

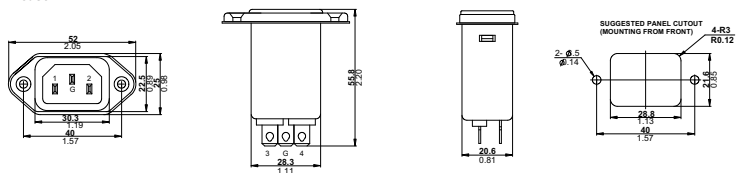
Mechanical Dimension

unit: mm
inch

S case



B case



SA case

